

SEPIA-T8

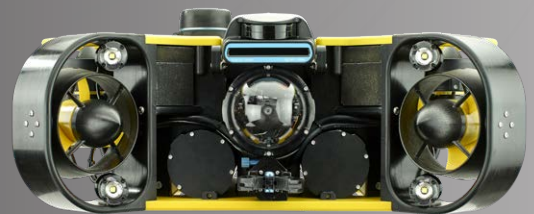
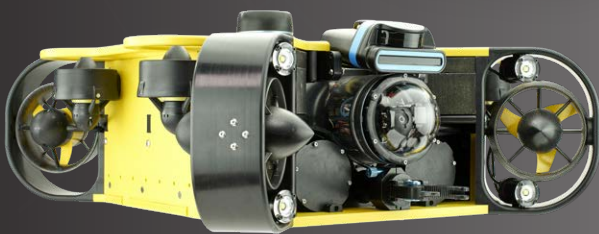
ROV SYSTEMS



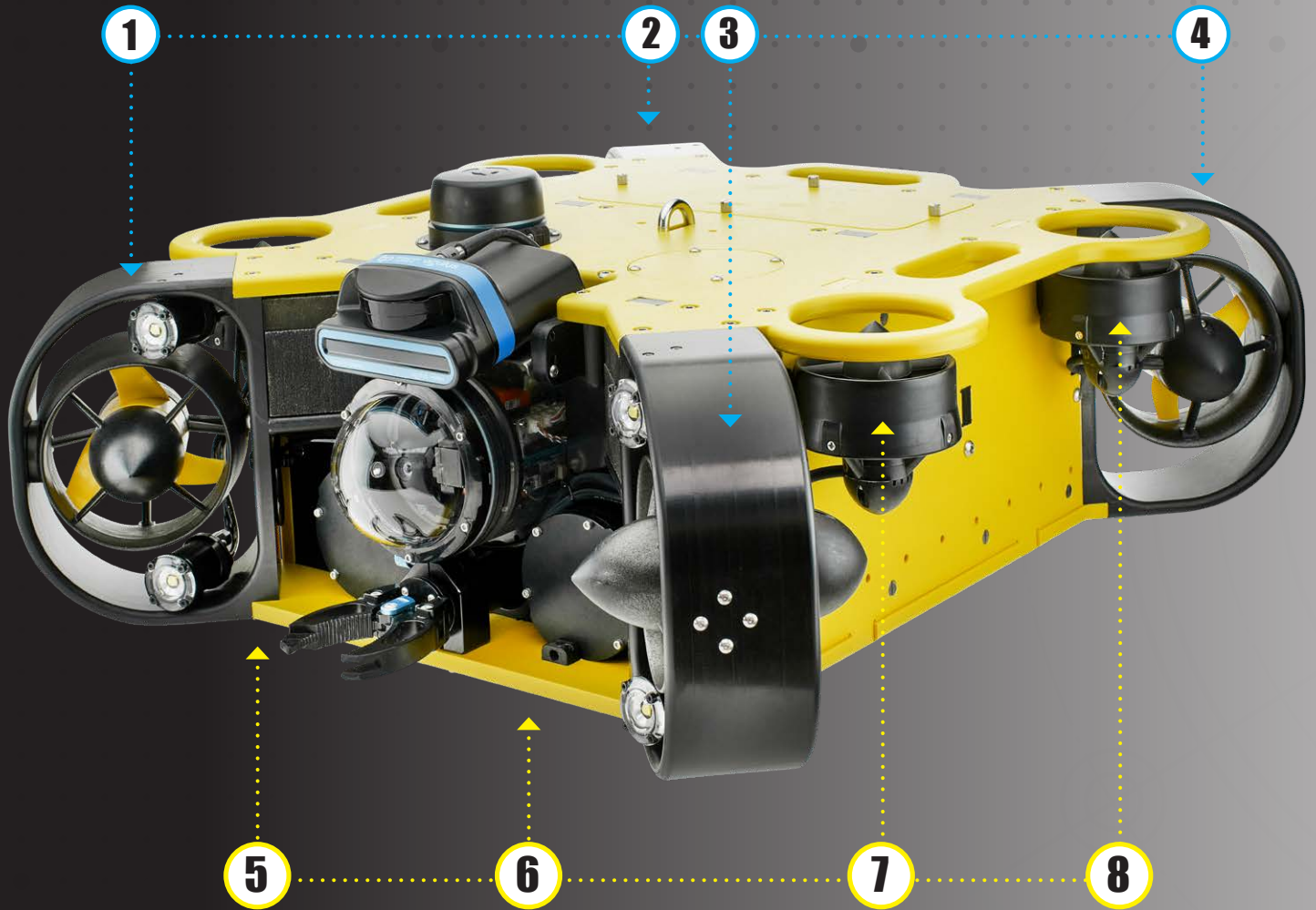
POWERED BY
SEASCAPE
SUBSEA

SEPIA-T8 ROV

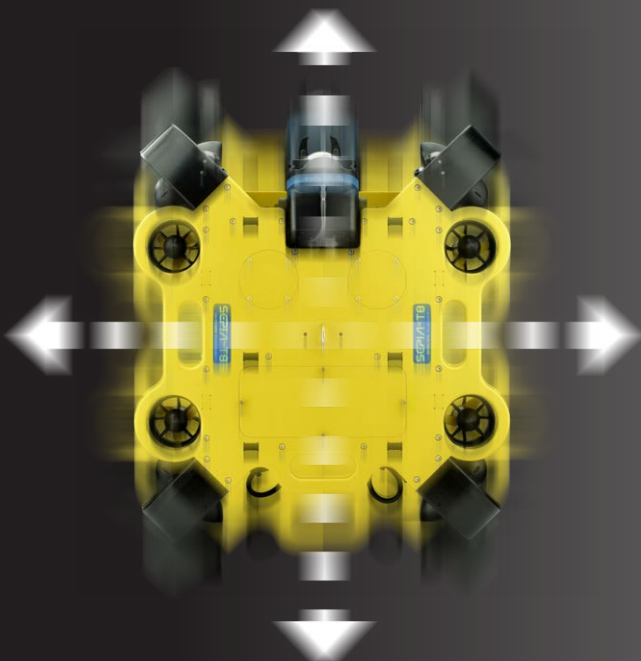
RUGGED / BIG PAYLOAD / PORTABLE
8X THRUSTERS / BATTERY POWERED
SIMPLE / EXPANDABLE / POWERFUL



THRUST 18 Kg 4x HORIZONTAL VECTOR Thrusters



4x VERTICAL Thrusters THRUST 14 Kg



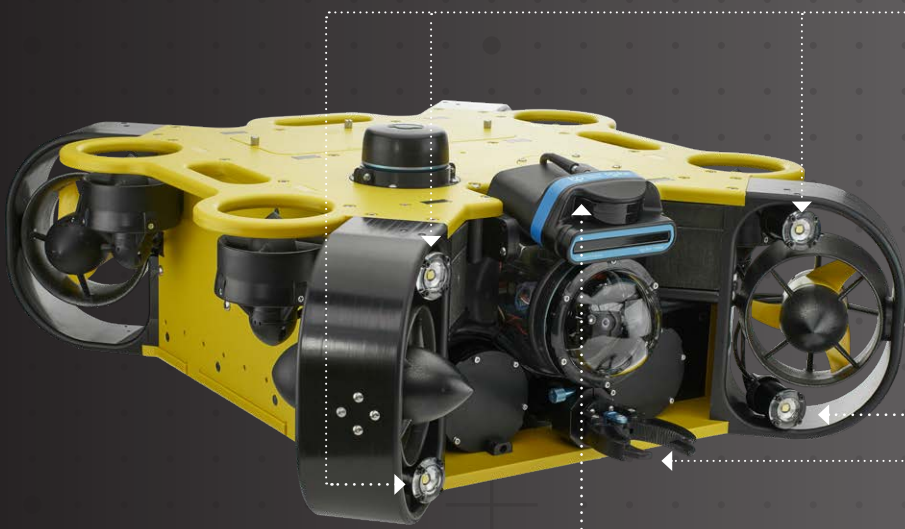
SPEED:

4 KNOTS

2 M/S

OMNIDIRECTIONAL

EXPANDABLE customize with ADD-ONS



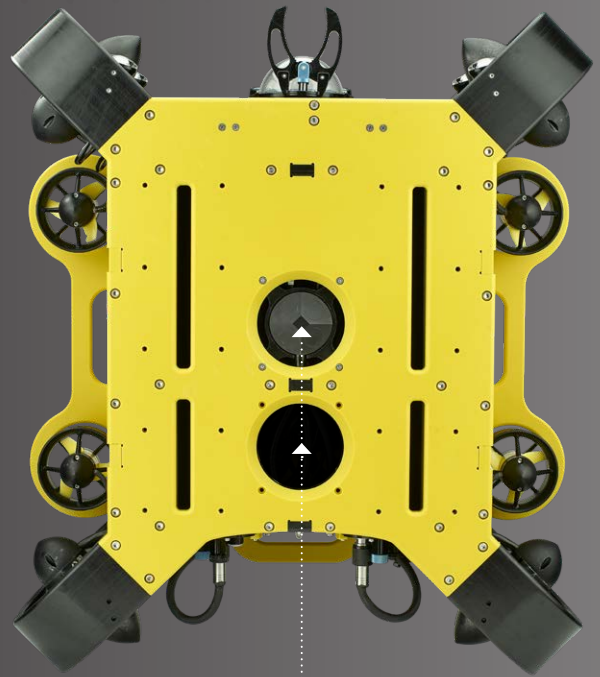
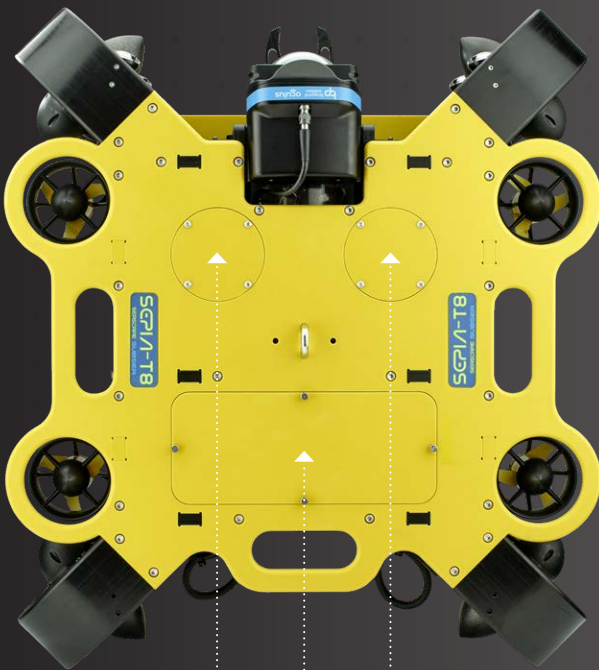
○ STANDARD 4x LED Lights
1500 Lumen, 5700K, 135°
Included with the ROV.

○ ADD ON : Gripper 120N
15 Kg Lift Capacity

○ ADD ONS: Multi Beam Sonar / Imaging Scanning Sonar

TOP SIDE

BOTTOM SIDE



EXTRA BAYS FOR OPTIONAL ADD-ONS



GIMBAL CAMERA



GPS



SCANNING SONAR



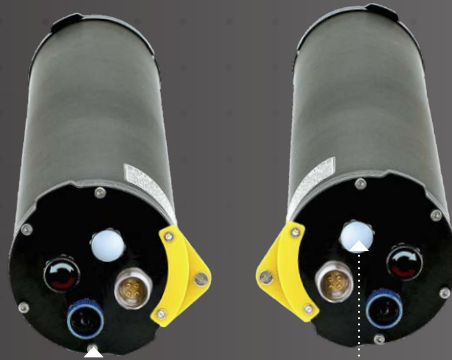
USBL

AUTONOMY

2 - 6 hours

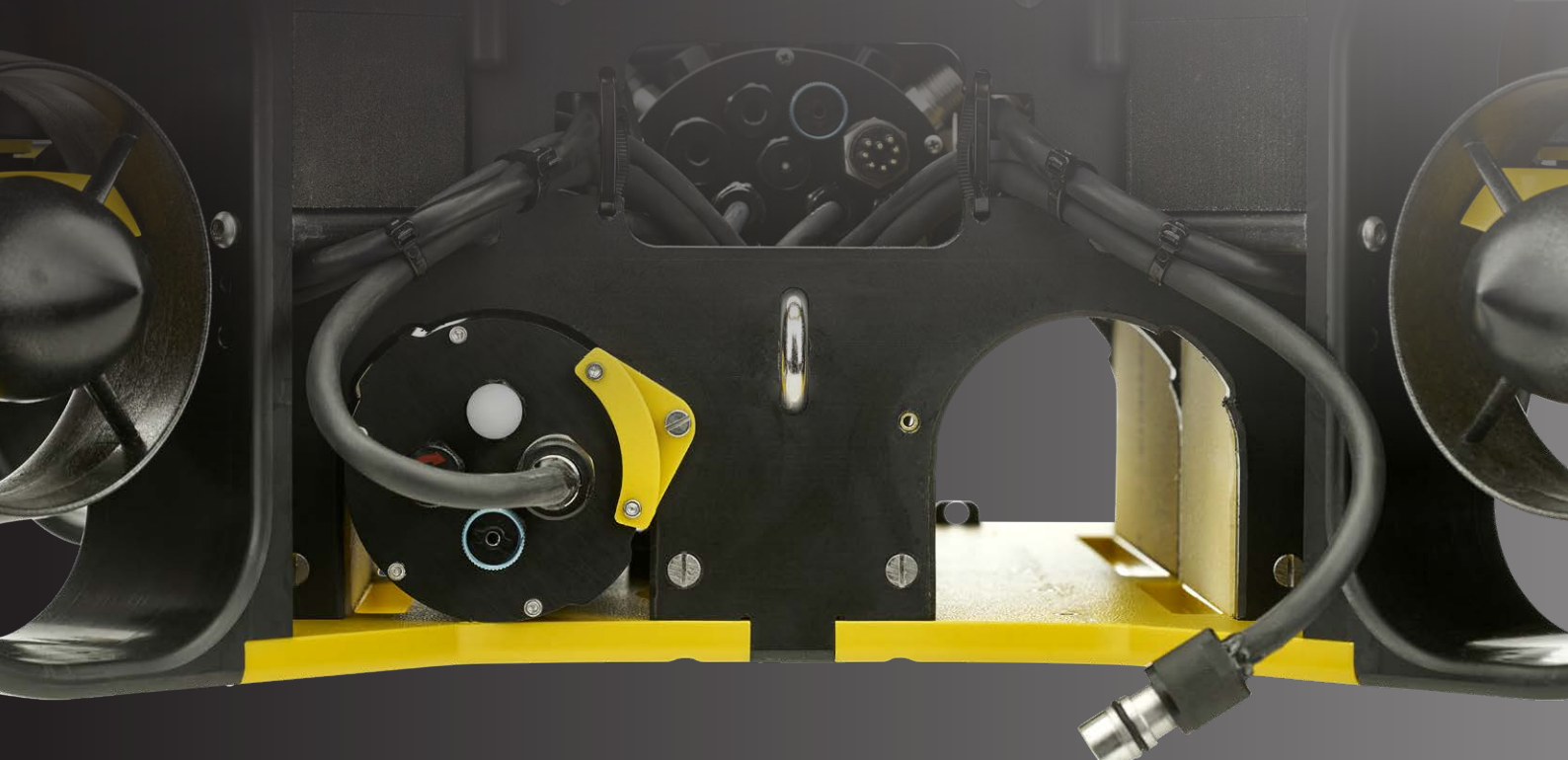


Easy & Quick Release + secure installation of battery

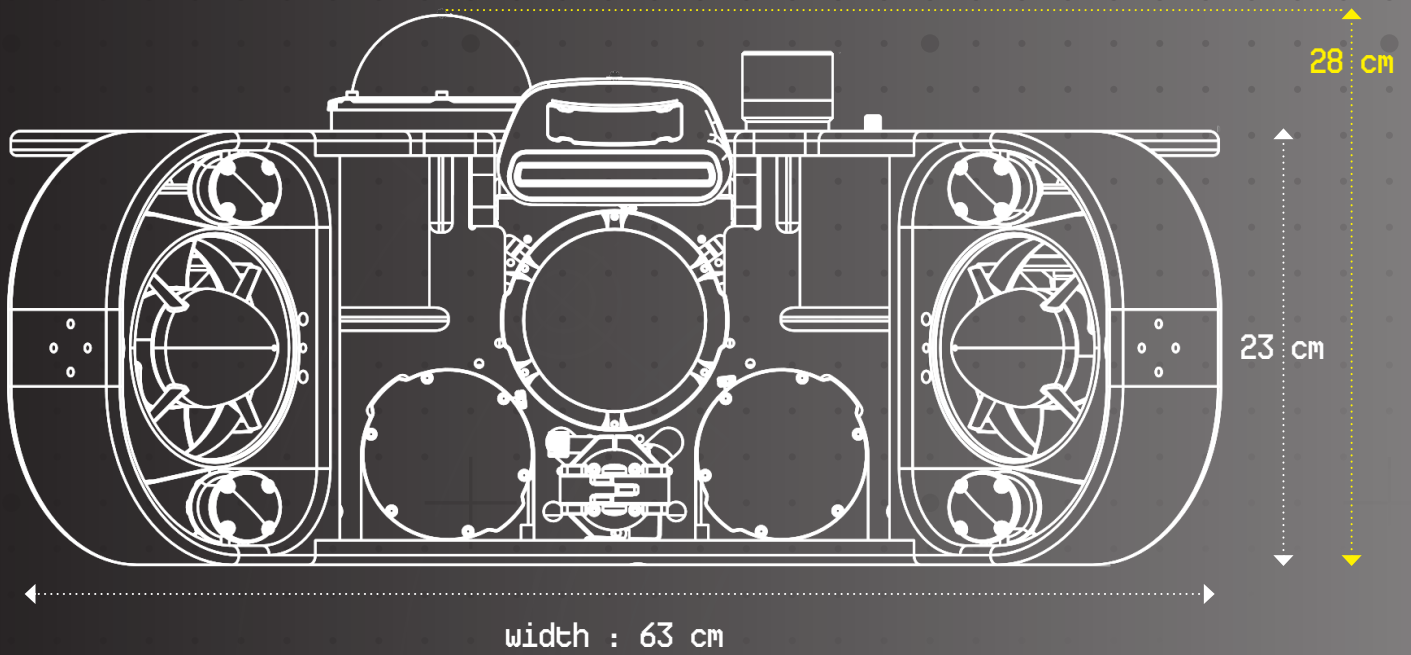


2x
605 Wh Li-ion_Battery ROV

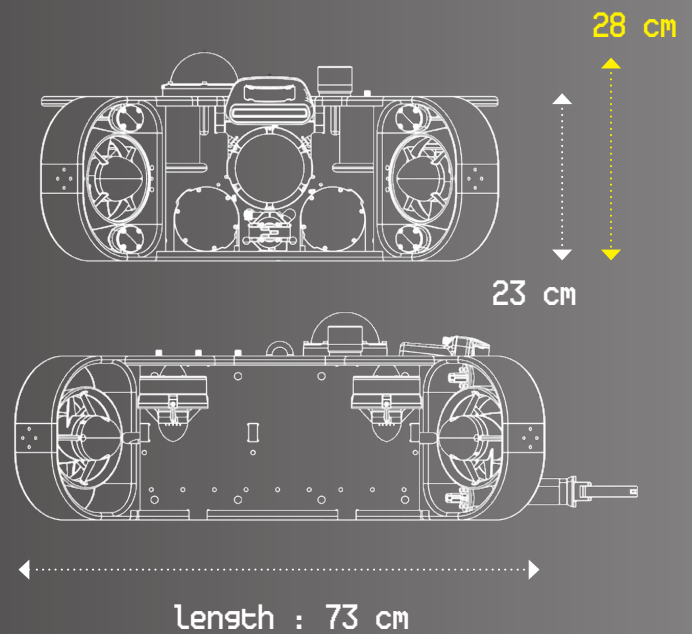
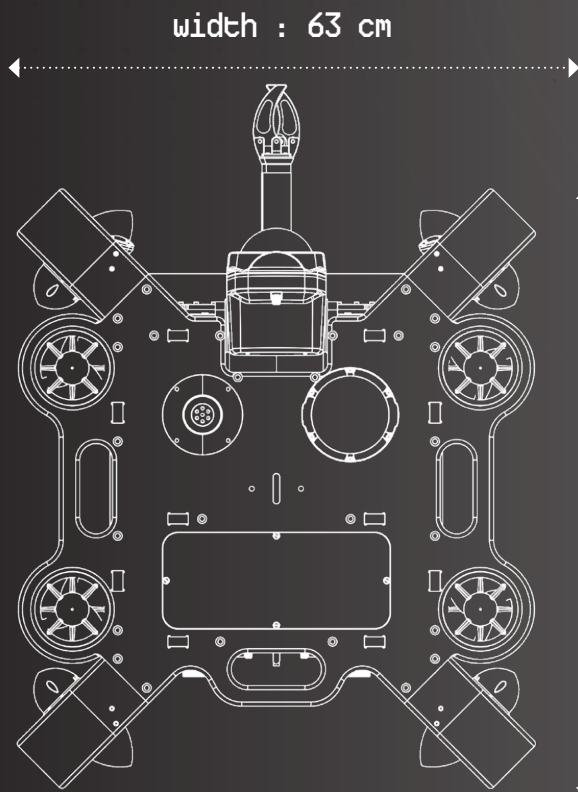
2x POWERFUL 'HOT SWAPPABLE' Battery Packs | Powerswitch ON/OFF



height : 23 cm / 28 cm with Sonar



WEIGHT:
32 Kg



Power

Thrusters:	Horizontal 500 watts, Vertical 350 watts
Battery:	2x 605 Wh Li-ion with BMS, standard charging time 3 hours, including 2x 100-240vac Chargers
Thrust:	Horizontal 18 kg, Vertical 14 kg
Max Speed:	4 knots (2 m/s)

Image

Camera:	Full HD (1080x1920) 110° horizontal field of view with tilt function, full 180° vertical field of view by tilting
Sonar Options:	Multibeam FLS: Oculus, Sonoptix Scanning: PING360, ISS360, Omniscan
Extra Add-Ons:	2nd camera, 1080P USB or Gimbal camera

Lighting

Standard:	4x 1500 lumen, 5700K, 135° lighting angle
Optional:	4x 1500 lumen, 5700K, 135° lighting angle

Sensors

Standard:	Depth, compass, angle sensors, internal water alarm, in-and external temperature, power and battery condition
Optional:	DVL, GPS, USBL

Control

Manual:	Horizontal and vertical movement with tilt option via hand controller
Automatic (standard):	Automatic depth and course control with horizontal stability maintenance
With DVL:	Stay on position and automatically navigate route or search area, relative position tracking on map
With DVL + GPS:	Absolute position (georeferenced) tracking on map

Display / Control Interface

Optional:	14" Rugged tablet, 1000 nits, Windows 11pro with Cockpit application PC / Laptop equivalent to a minimal Intel i5 gen8, 16 Gb.
-----------	---

Hand controller

Optional:	Rugged SSROV-HC hand controller wireless XBOX compatible hand controller
-----------	---

Tether

Diameter:	Standard: Ø 7.6 mm (8 core) Optional: Ø 4.0 mm (2 core)
Length:	10 to 300 meters on reel with slip rings
Weight:	Ø 7.6 mm 43 kg/km, Ø 4.0 mm 12 kg/km, neutral in fresh water, slightly positive buoyant in salt water
Working:	35 kg working strength,
Breaking strength:	55 kg breaking strength
Connector and connection:	8-pin rubber underwater plug MCIL8F with stainless steel carabiner hook for strain relief

Connections

Network:	3x network ports for DVL,sonar etc, of which one with extra RS232TTL, COB-1180-R1 connector
USB:	1x USB for cameras or sonar, COB-1160-SS connector
Power&PWM:	1x Power with 2x PWM channels for Gripper or other servo control, COB-1140-SS connector
RS485 (optional)	1x RS485
RS485 (optional)	2x RS232 (or TTL)

Dimensions

Length x Width x Height:	730x630x230 mm, height with sonar etc. 280 mm
Weight:	32 kg
Payload capacity:	1.6 kg (an additional 1.4 kg of equipment can be mounted by removing ballast)

Material:

HDPE, anodized aluminum, stainless steel, polycarbonate

Operating depth:

100 meters (optional 300 meters)

Transport

Optional: Flight cases with wheels ROV: 85x72x45 cm Reel: 86x56x46 cm

Trolley carrying ROV, Reel, 14" Tablet and controls

ROV SET-UP

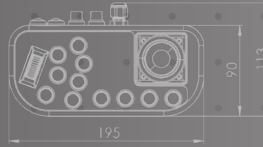
TOPSIDE



Tablet or PC / Laptop



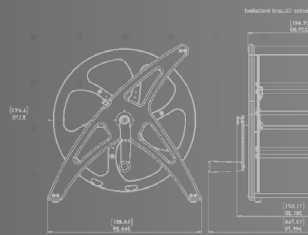
Hand Controller



Fathom-X-Tether-Interface-FXTI

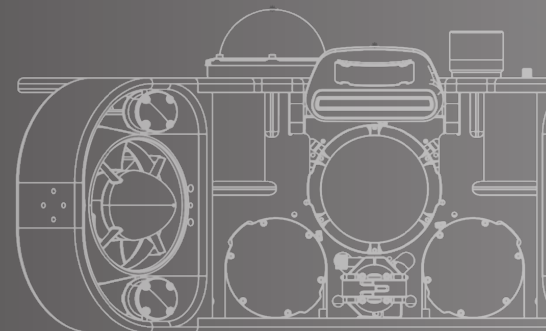
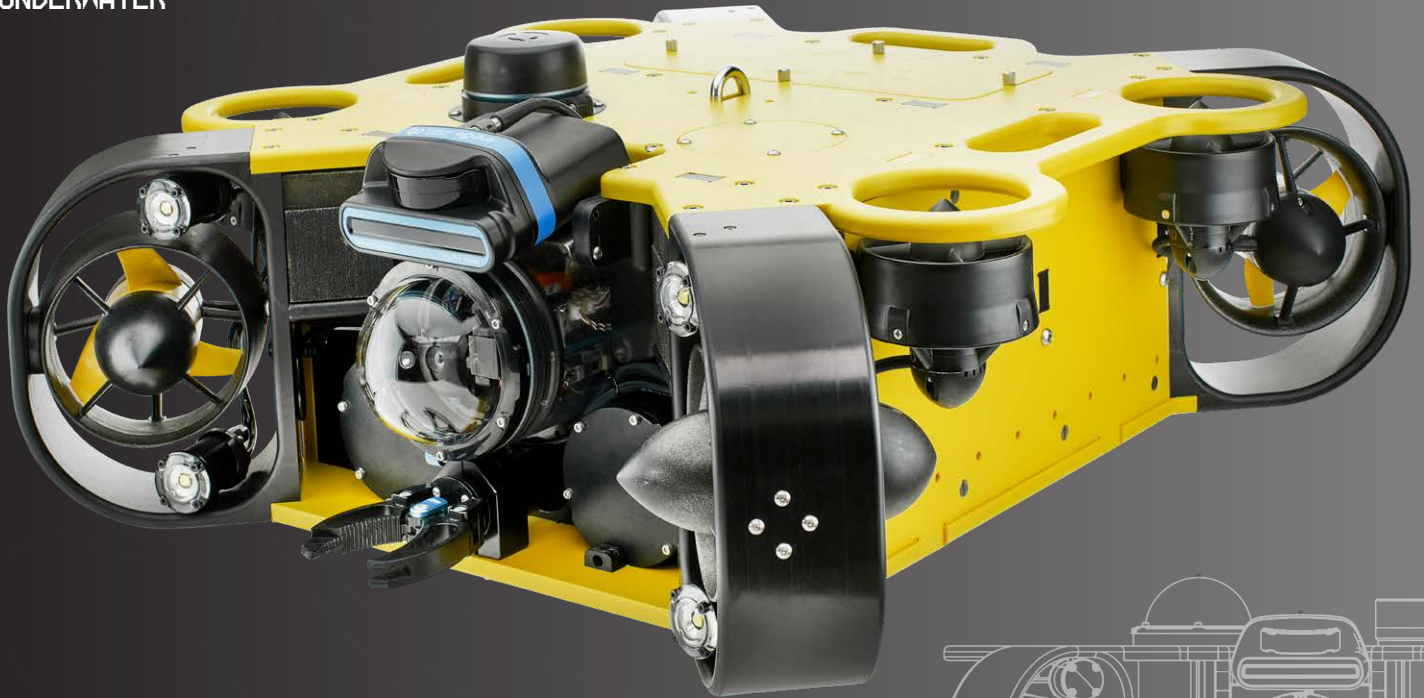


TETHER cable



ROV SET-UP

UNDERWATER



SEPIA-T8 ROV CONTROLS

14" Rugged ROV TABLET

1000 Nit Touch Screen - Glove compatible

IP65 WATERPROOF



Windows 11 PRO PC Tablet

Handle (removable)

PORTS

USB 2

USB 2

COM

RJ45

POWER DC JACK



25 cm

Built-In + Hot Swappable Battery



36 cm

WEIGHT
2.3 kg



- HDMI
- USB 3.2
- Audio Port
- Type C | Thunderbolt 4
- RJ45



SS-ROV Hand Controller

COCKPIT APP Mission Control

IP65 Compliant & Robust

SEASCAPE ROV SYSTEMS

Integrated PC



- o rugged case
- o 18.5" Touch Screen
1000 Nit
- Thether Connection
- RJ45
- LAN
- 2x USB 3.0
- 2x USB 2
- Power

o wireless keyboard
with mousepad

built-in UPS

2x built-in Speakers

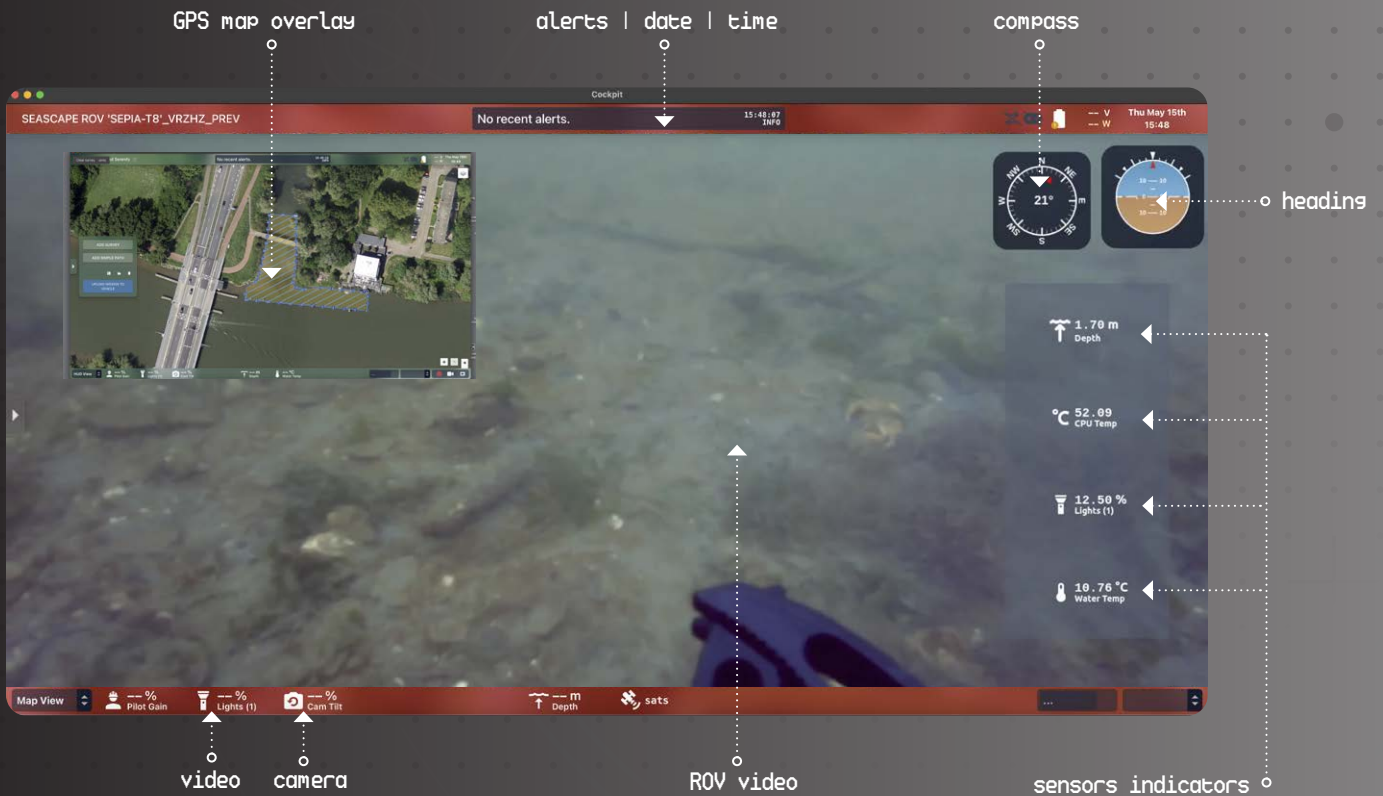
WEIGHT 18.4 kg

61 cm

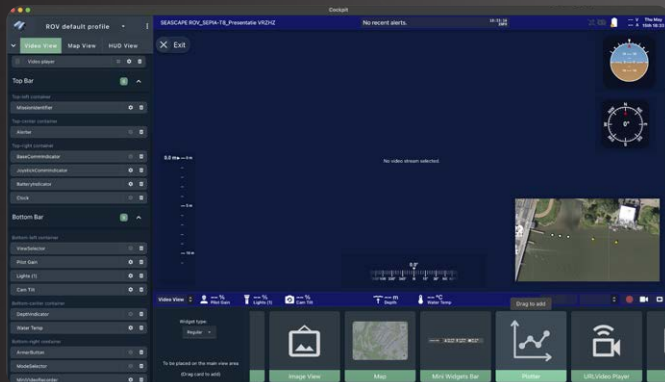
48 cm



ALL-IN-ONE Solution For field use

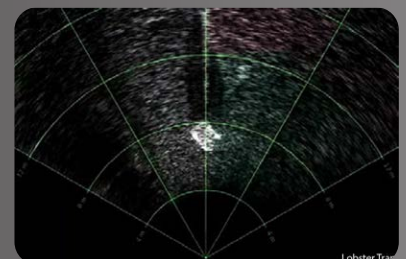
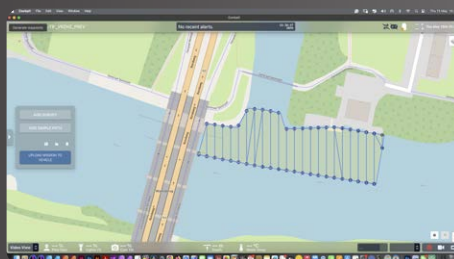
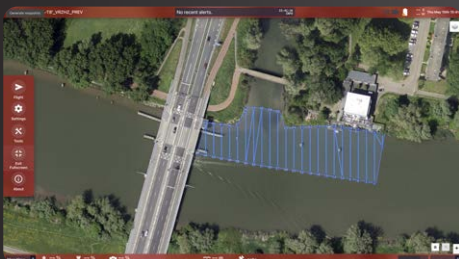


Customizable User Interface



Switchable Window Views

- Widget-based layout system
- Custom display
- Generic input display widgets
- External widgets detection
- WebRTC-based video widget
- DIY widget
- Map widget
- Multi-device view support
- Mission planning & Control etc.



Switchable Window Views

Sonar view overlay

SEPIA-T8 ROV CONTROLLER

HAND CONTROLLER

IP65 Compliant & Robust

SEASCAPE
ROV SYSTEMS



- ONE JOYSTICK ○
- Forward - backward
 - Left - right
 - rotate
 - 2-function buttons



USB Cable (Length 150 cm)

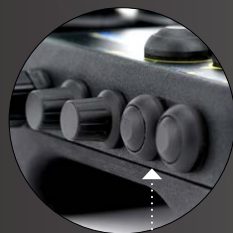


- FUNCTION BUTTONS:
- Hold
 - Toggle
 - Roll
 - Pitch
 - Manual
 - Stabilize
 - Depth
 - Position
 - Arm - Disarm
 - Shift



THUMBWHEEL

- up- down
- spring released



CUSTOM ASSIGN

4x free selectable functions

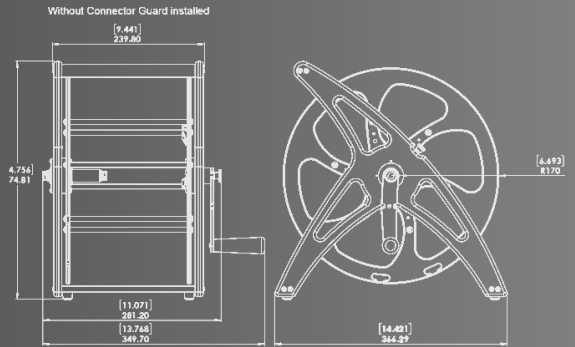
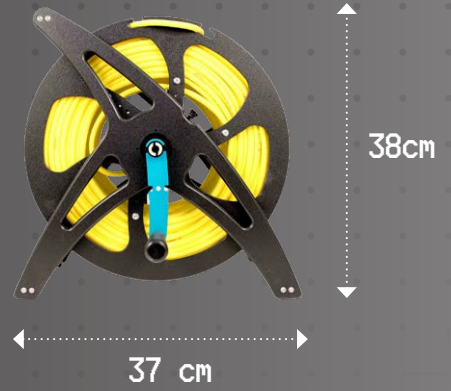


Standard Option

150 M

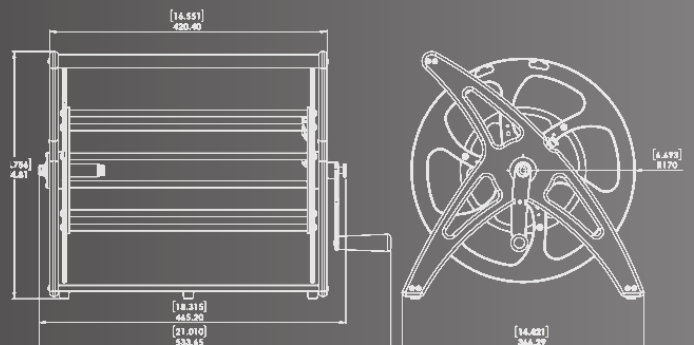
WEIGHT

2.2 Kg



OPTIONAL
300 M

WEIGHT
2.9 Kg



STANDARD
120 N



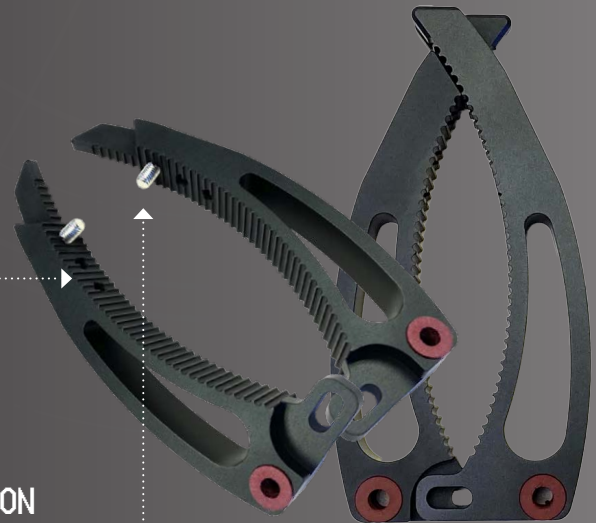
SMALL
CLAW

STANDARD



Overall Length (Closed)	303.2 mm	11.94 in
Overall Length (Open)	309.2 mm	12.17 in
Grip Force (at tip)	97N	22lbf
Grip Force (in middle)	124N	28lbf
Jaw Opening	62 mm	2.44 in

OPTIONAL



LARGE + EXTENSION
& EXTRA GRIP

LARGE
CLAW



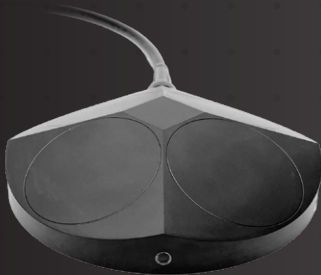
BlueRobotics NEWTON



GIMBAL CAMERA

Mounting on top or bottom of ROV
Resolution: 1080p
Pan: 320°
Tilt: 180°
Auto stabilize, manual control of Pan & Tilt

SENSCOPE
ROV SYSTEMS



DVL A50

DVL for underwater positioning
ROV altitude, position hold and auto altitude
function

Minimal altitude : 5 cm
Maximum altitude : 50 m

Water Linked's doppler velocity logs (DVLs) provide accurate velocity measurements for your ROV,

WaterLinked



GPS SUBMERSIBLE

To be used when ROV at surface as start position for DVL navigation

Depth rated : 100 m
RTK accuracy : < 1 cm
SBAS accuracy : < 0.9 m

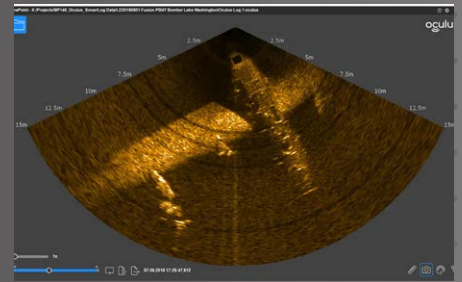
SENSCOPE
ROV SYSTEMS



OCCLUS M-series

MULTI BEAM SONAR

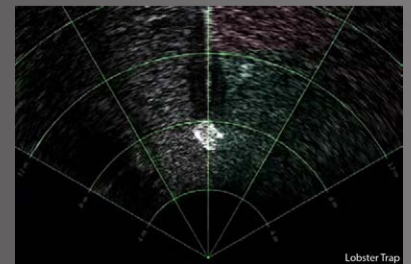
Frequency : 375 KHz to 3 Mhz
 Range : 0. m - 200 m
 Beams : 512
 Horizontal Aperture : 130° / 60°



SONOPTIX ECHO

MULTI BEAM SONAR

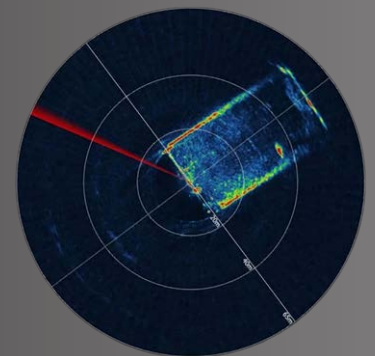
Frequency : 400 kHz (>30m) / 700 kHz (<30m)
 Range : 100 m @ 400 kHz / 30 m @ 700 kHz
 Beams : 256
 Horizontal Aperture : 120° / 90°



ISS360

SCANNING IMAGING SONAR

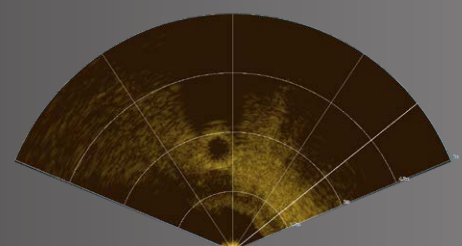
Frequency : 600 - 900 kHz
 Range : 0.15 - 90 m
 Resolution : 2.5 mm
 Step Size : 0.225°, 0.45°, 0.9°, 1.8°, 3.6° & 7.2°
 Beam Angle : 23° Vertical / 2.2° Horizontal



PING 360

SCANNING IMAGING SONAR

Frequency : 750 kHz
 Range : 0.75 - 50 m
 Resolution : 4 mm



CUSTOM MADE

