

RGT14-I5 14" Rugged Tablet U125, Full HD, 1000 nits

RGT14-U125 | 14" Rugged ROV Tablet for controlling and monitoring ROV operations with the COCKPIT Application.

The RGT14-I5 **ROV TABLET** is a rugged tablet for operating and monitoring the **SEPIA-T8** or BlueROV2.

Designed for field use, it integrates a high-performance tablet, a sunlight-readable 14-inch touchscreen monitor, and an intuitive COCKPIT application. The tablet can be used with the SEASCAPE's waterproof ROV Handcontroller and ensures seamless ROV control with a Fathom-X tether interface, for uninterrupted operations.



The **ROV TABLET** is configured with **COCKPIT**, a ROV mission control app.

COCKPIT offers a highly customisable interface through its innovative widget system, enabling you to tailor the layout to your precise requirements. You can select from a variety of HUDs, indicators, virtual horizons, and more. Furthermore, Cockpit allows the creation of multiple profiles, suitable for different vehicles and mission types. This level of flexibility positions Cockpit as an ideal solution for users across diverse vehicle platforms.

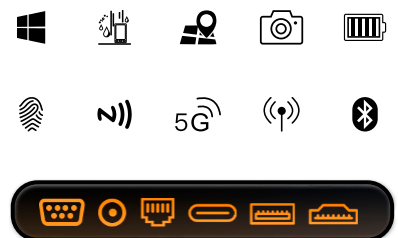
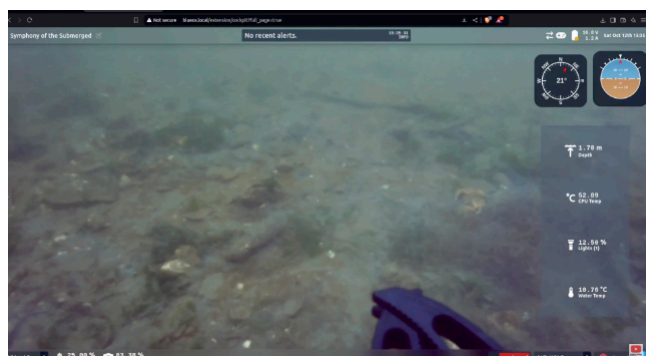
In addition, Cockpit enables direct video recording on the onboard computer, including the ability to capture telemetry as subtitle files. These recordings feature fully customisable layouts, allowing you to select the information you wish to log and determine its placement on the display. This functionality is available with both Full HD and 4K videos.

Features:

- U125 PC Tablet
- 1000 nits
- Touchscreen
- Rugged IP65

Applications:

- ROV Operations



website link : <https://www.seascapesubsea.com/product-categorie/rovs-parts/topside-control/>
product video :

RGT14-I5 14" Rugged Tablet U125, Full HD, 1000 nits

COCKPIT App features

Performance	
CPU	Intel® Core™ U125H
OS	Windows 11 Pro
RAM	16GB
ROM	256GB SSD
Communication	
WiFi	WiFi 6, 802.11
Bluetooth	BT5.1 / Transmission distance: 10m
4G (Optional)	4G(Optional M.2 European version) LTE-FDD: B1/3/5/7/8/20/28, LTE-TDD: B38/40/41
5G (Optional)	NSA / LTE / LTE-FDD / LTE-TDD
GNSS	Supports single GPS or single glonass, default GPS
Basic parameters	
LCD	14 inch LCD 16:9, 1920x1080, 1000 nits 10 point G+G capacitive touch screen, Hardness above 7H; Scratch-resistant; Supports glove touch
Touch Panel	
Camera	Front 5.0MP (USB) / Rear 8.0MP (USB)
I/O	USB3.2 *1, USB2.0 *2, TYPE-C, Supports Thunderbolt 4, HDMI 2.0a mini x1, SIM *1, TF *1, DB9 (RS232)*1、RJ45 *2, 12PIN Pogo Pin *1, 3.5mm Standard Earphone Jack *1, DC19V/3.78A Power port *1, M.2-2280 PCIe interface *1, optional SSD, M.2, E-KEY, PCIe interface *1, optional Custom module
Power	AC100V ~ 240V, Output DC 19V/3.78A 71.82W(EU Standard) Optional: US Standard
Battery (Built-in)	
Capacity	11.1V/1300mAh
Type	Built in Li_polyment,battery loadable
Endurance	1.5hrs (Default 50% volume, 200 lumens brightness, playing 1080P HD video)
Battery (Hot-swappable)	
Capacity	11.55V/4850mAh
Type	Li_polyment, removeable battery
Endurance	8hrs (Playing 1080P HD video, Conditions: System in balance mode, 320 lumens, 70 dB at 10cm, WiFi and Bluetooth turned off.)
Data Collection	
NFC	USB interface, supports ISO14443A, ISO14443B, IOS15693, ISO18092, Felica
Fingerprint	Built in, used for power-on login
2D Barcode Scanner	Optional, USB interface, Optical Resolution (Scanning Accuracy): ≥3mil
Reliability	
Operate Temperature	-20 °C ~ 60 °C
Store Temperature	-20 °C ~ 60 °C
Humidity	95% Non-Condensing
Rugged Feature	IP65 certified, MIL-STD-810H certified
Drop Height	1.22m
Dimension	
Length	366.2 mm
Width	246.9 mm
Height	24.8 mm
Weight	2.3 kg

- Browser-based control station
- Widget-based layout system
- Custom display
- Generic input display widgets
- External widgets detection
- WebRTC-based video widget
- DIY (Do It Yourself) widget
- Map widget
- Multi-device view support
- Shareable views
- Multiple video streams
- Local video recording
- Recording layout customisation
- Mission planning
- Mission control
- Mission naming
- Actions system
- Action triggers
- Multi-source input
- Widget-based layout system
- Full input mapping
- Predefined calibrations
- Accessible Data Lake
- Custom variables
- Notification system
- Text-to-speech support



COCKPIT Remote Control Application for ROV's

COCKPIT | Mission Control for ROV

The Cockpit App offers a highly customisable interface through its innovative widget system, enabling you to tailor the layout to your precise requirements.

You can select from a variety of HUDs, indicators, virtual horizons, and more.

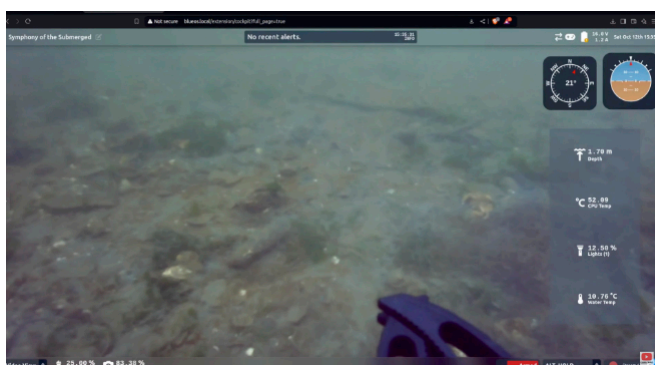
Furthermore, Cockpit allows the creation of multiple profiles, suitable for different vehicles and mission types. This level of flexibility positions Cockpit as an ideal solution for users across diverse vehicle platforms.

The Cockpit App is fully supported and has undergone extensive testing and piloting of ROVs.

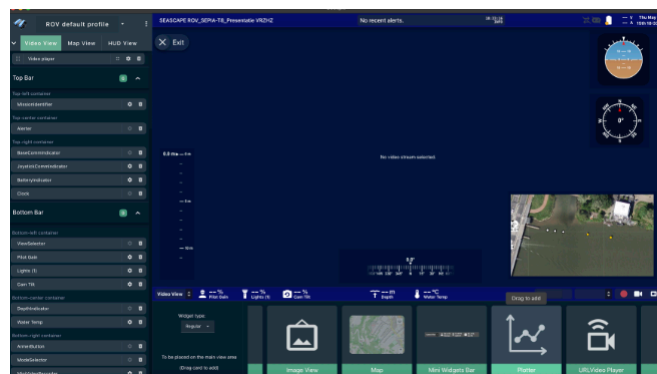
Cockpit App supports a wide range of joystick controllers, with pre-configured calibrations for several popular models, including the SSROV-HC, a waterproof ROV Hand Controller is designed and manufactured by SEASCAPE SUBSEA.

In addition, Cockpit enables direct video recording on the onboard computer, including the ability to capture telemetry as subtitle files. These recordings feature fully customisable layouts, allowing you to select the information you wish to log and determine its placement on the display. This functionality is available with both Full HD and 4K videos.

- Camera control
- Light control
- Recording
- Clip Recording
- Snapshot
- Quick overlay changes
- Windows & MacOS
- Position tracking
- Mission Planning + Control
- Switchable UI profiles/pages
- Multi-source input
- Widget-based layout system

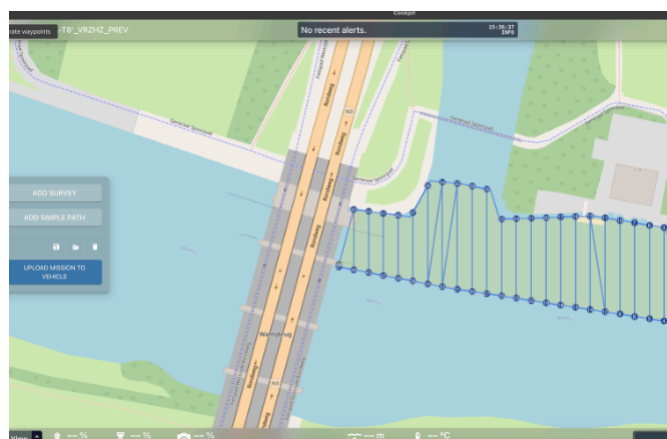


COCKPIT ROV application FPV of camera



Interface can be customised to users preferences

COCKPIT has configurable overlay and screen options:



GPS Map overlay with 'flight-pattern' of ROV



GPS Satellite overlay with 'flight-pattern' of ROV

Available products that can be used in combination with 14" ROV Tablet :

SEPIA-T8



INSPECTION ROV with 8 thrusters

BlueROV2



BlueRobotics Inspection ROV

SSROV-HC



Waterproof ROV Hand Controller

XBOX



Hand Controller

LogiTech



Hand Controller

FATHOM-X



ROV Tether Interface