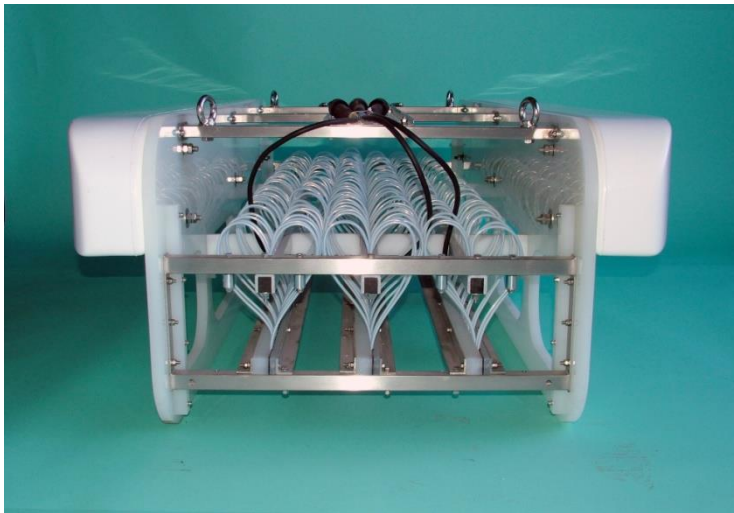


Dura-Spark 240, Seismic Sound Source



Key Features

- Long life, durable electrodes
- Pulse stability
- High resolution sub-bottom data, up to 25cm.
- Operator selectable source depth
- Tip array selection from on board junction box

Applications

- High and Ultra-High Resolution geophysical surveys
- Single and multi-channel acquisition
- Water depths of 5 to >1000m

The Dura-Spark has been designed to provide a stable, repeatable sound source for sub-bottom geophysical surveys. The long life, durable electrodes produce a consistent pulse signature and keep operational maintenance to a minimum. This provides increased survey efficiency and equipment reliability as the sparker tips rarely need replacement.

The Dura-Spark 240 is based on the CAT300 catamaran, providing a stable platform whilst under tow. The catamaran has robust solid floatation and is easily deployed from all survey vessels.

The Dura-Spark 240 consists of 3 arrays of 80 tips allowing the operator to tune the source from the vessel to its application. This flexibility, together with selectable source depth, allows the sound source to be used in both shallow and deep waters.

The typical operational bandwidth of the Dura-Spark 240 is 300Hz to 1.2kHz. When coupled with the CSP-N Seismic Power Supply the system offers 2000J/s peak discharge rate, as well as industry leading design and safety standards.

Dura-Spark 240 Technical Specification

PHYSICAL

Dura-Spark 240 on CAT300 catamaran

Dimensions	1700mm (L) 490mm (H) 660mm (W) frame/876mm (W) including floats
Weight	60kg
Connector	RMK 1/0 complete with locking collar

ELECTRICAL INPUT

Recommended energy	1000J/shot 5J per tip to minimise bubble collapse component
Maximum energy	1250J /shot
Operating voltage	3000-4000V
Maximum number of tips	240 (3 x 80)

SOUND OUTPUT

Source level	Typically 225dB re 1 μ Pa at 1 metre with 1000J
Pulse Length	0.5 to 1.5ms Dependent on tips and power applied

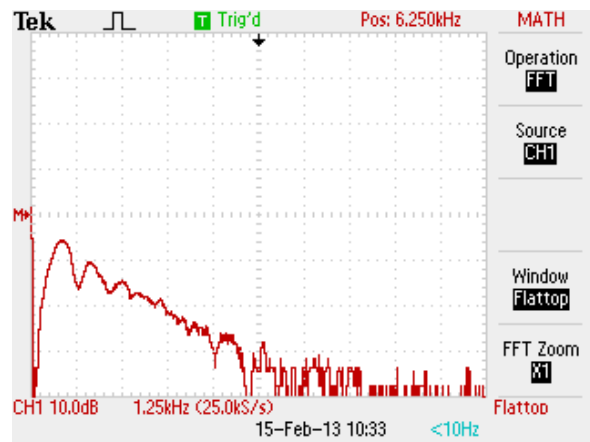
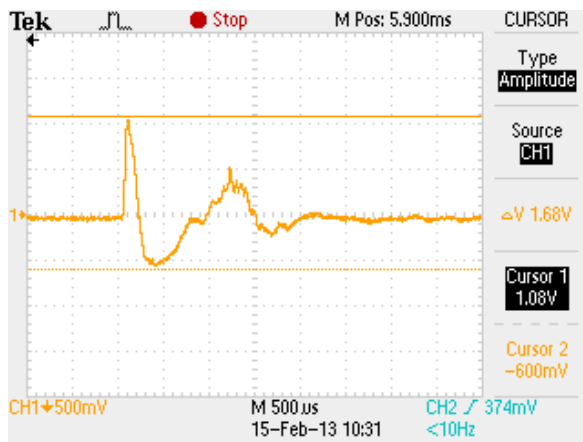
COMPATIBLE ENERGY SOURCE

Dura-Spark 240	CSP-N1200
----------------	-----------

COMPATIBLE HIGH VOLTAGE CABLE

Dura-Spark 240	HVC 3500 Standard length 75m RMK connectors complete with locking collars
----------------	---

TYPICAL PULSE SIGNATURE AT 1000J



Due to continual product improvement, specification information may be subject to change without notice.
Dura-Spark240/March 2014
©Applied Acoustic Engineering Ltd.



Applied Acoustic Engineering Ltd

- T +44 (0)1493 440355
- F +44 (0)1493 440720
- E general@appliedacoustics.com
- W www.appliedacoustics.com