

AA251, AA301 Boomer Seismic Sound Source



The **AA251** and **AA301** boomer plates are seismic sound sources that produce a sharp repeatable pulse from a floating position on the sea surface.

The AA251, deployed on either a robust CAT100 or CAT200 catamaran, is ideal for inshore surveys from small craft.

The AA301 is designed for higher power applications and can also be used as a variable frequency boomer when combined with the CSP-D range of energy sources.

Key Features

- Stable pulse shape clarity with minimum reverberation
- Rugged mechanical design with weight kept to a minimum
- Supplied as individual product, or with a catamaran
- Supplied with RMK connectors and locking collars as standard.
- AA251 forms part of the Inshore Boomer System, ideal for coastal surveys
- AA301 ideal for nearshore and shallow water surveys (100-150m) depending on geology

Technical Specification

PHYSICAL

	Size	Weight air/water	Fixing centres	Connector
AA251 Boomer plate	380 x 380mm	18kg/10kg	315mm ²	RMK 1/0
AA301 Boomer plate	620 x 520mm	25kg/14kg	485mm x 440mm	RMK 1/0

ELECTRICAL INPUT

Recommended energy	AA251	50 – 200J/shot
	AA301	100 – 300J/shot
Maximum energy	AA251	300J/shot
	AA301	350J/shot

AA251, AA301 Technical Specification continued...

Average energy	AA251	600J/second
	AA301	1000J/second

Operating voltage 3600 to 4000Vdc

SOUND OUTPUT

Source level	AA251	Typically 212dB re 1 μ Pa at 1 metre with 200J
	AA301	Typically 215dB re 1 μ Pa at 1 metre with 300J
Pulse length	AA251	120/150/180 μ s at 50/100/200J
	AA301	200 μ s depending on energy setting of CSP
Reverberation	AA251	<10% of initial pulse
	AA301	<10% of initial pulse

COMPATIBLE ENERGY SOURCES

AA251	CSP-L, CSP-P, CSP-D, CSP-N1200, CSP-S1250, CSP-S4000, CSP-S6000
AA301	CSP-P, CSP-D, CSP-N1200, CSP-S1250, CSP-S4000, CSP-S6000

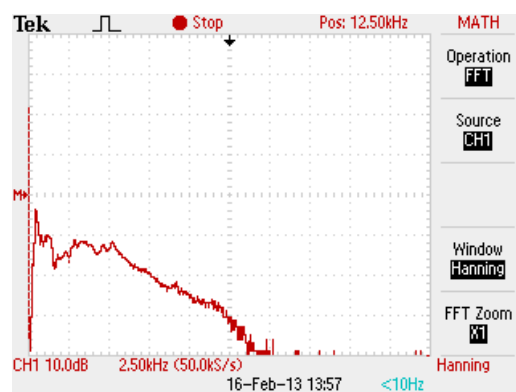
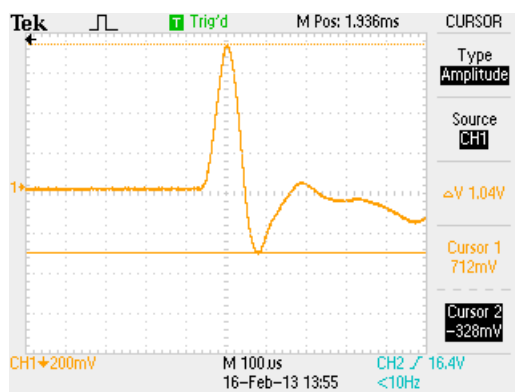
COMPATIBLE CATAMARAN

AA251	CAT 100:	940 (L) x 740 (W) x 500 (H) mm
	CAT 200:	1280 (L) x 915 (W) x 525 (H) mm
AA301	CAT 200:	1280 (L) x 915 (W) x 525 (H) mm
	CAT 300:	1700 (L) x 660 (W) x 490 (H) mm

COMPATIBLE HV CABLE

AA251 and AA301	HVC 2000 Standard length 50m RMK 1/0 connectors complete with locking collars
-----------------	---

AA301 TYPICAL PULSE SIGNATURE AT 300J



Due to continual product improvement, specification information may be subject to change without notice.
AA251, AA301 Boomers/Nov 2013
©Applied Acoustic Engineering Ltd.



Applied Acoustic Engineering Ltd

T +44 (0)1493 440355
F +44 (0)1493 440720
E general@appliedacoustics.com
W www.appliedacoustics.com