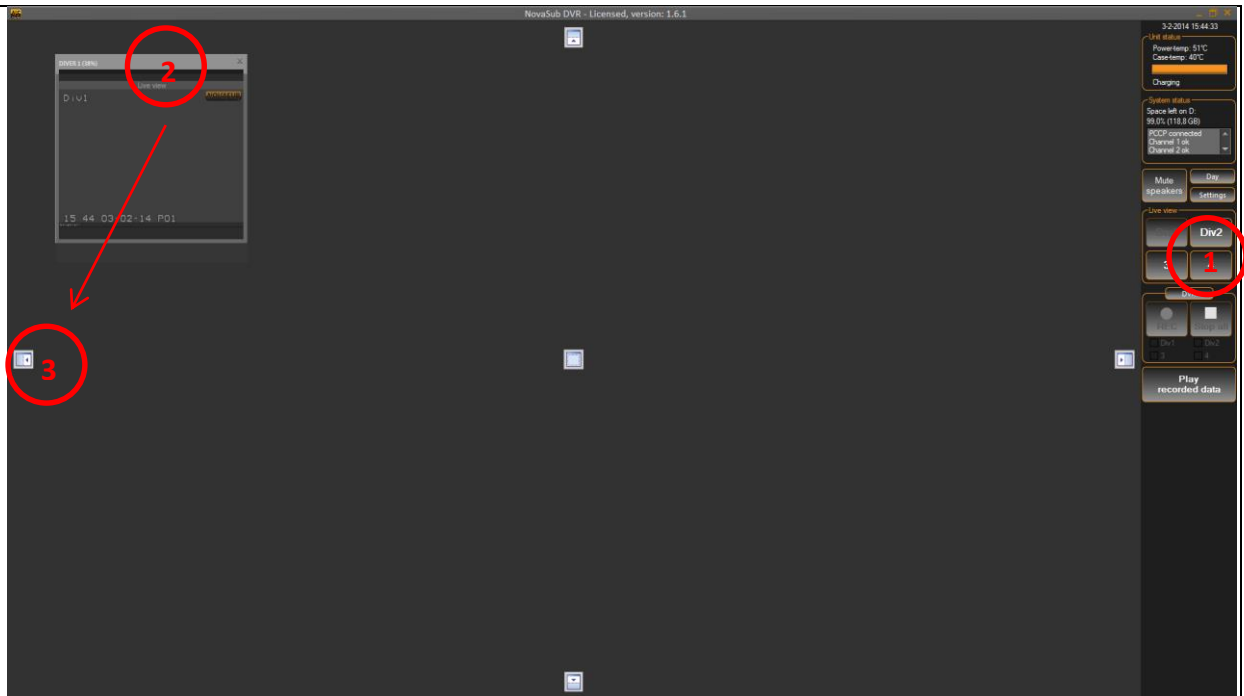


### Selecting channels and docking within window

Click on channel (1) → grab small window (2) and drag to a desired position indicated by the white square (3) in the middle and the four sides of the main window.

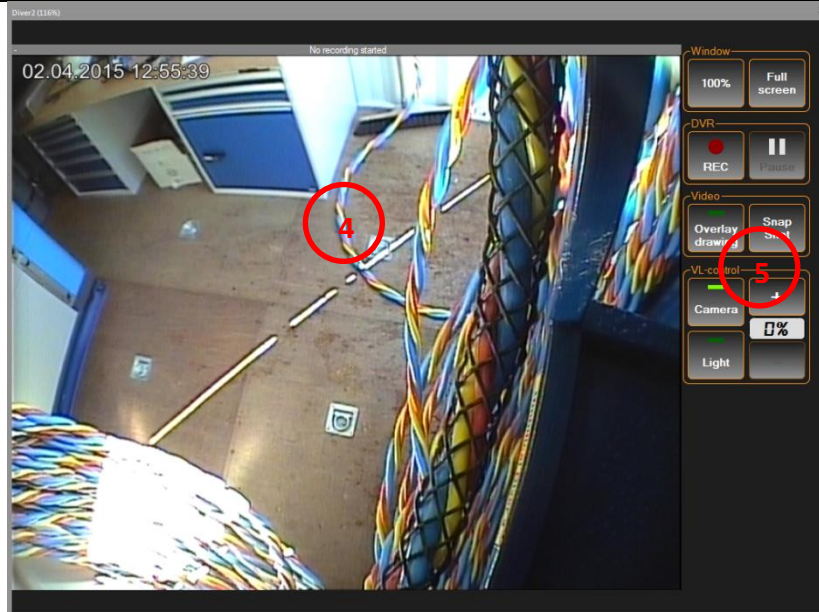


### Channel controls

Right Click within the window (4) to activate the right side button bar.

### Camera&Light Control\*

Click on camera to switch camera on and click light to switch light on (5). Increase light with + and -



The light intensity is indicated in percentages 0% is off, 100% is fully powered.

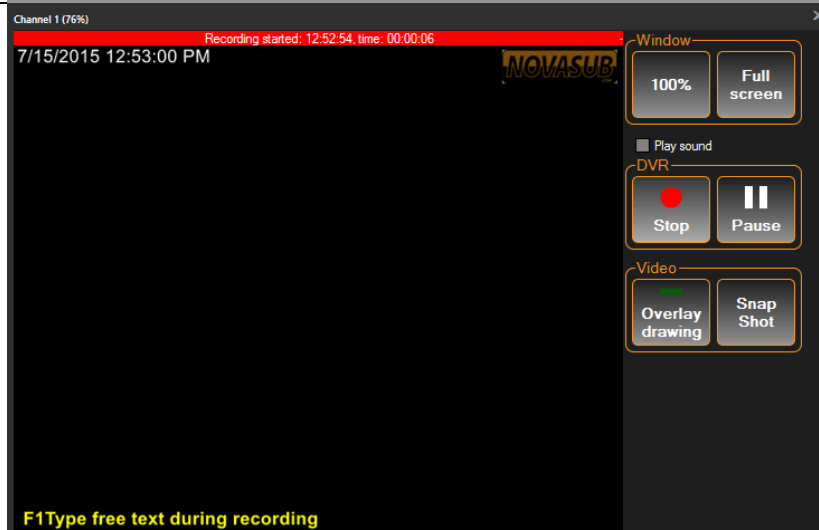
**\*Only available with Novasub Camera&Light hardware**

### Recording

Click REC to start the recording. Press Stop to stop recording.



Press pause to pause the recording. Press resume to continue. A new video file will be made.



The title bar changes red and indicates the recording start time and elapsed time.

Press resume to continue recording.

Press SnapShot to make a picture.

The recorded files are saved in the folder you have selected in Settings-System (Data Path) Each recording makes a new folder in the selected path.

### Overlay

The overlay can be configured in Setting→Channel→Overlay.  
The overlay is text(6), data(7) and graphics(8).

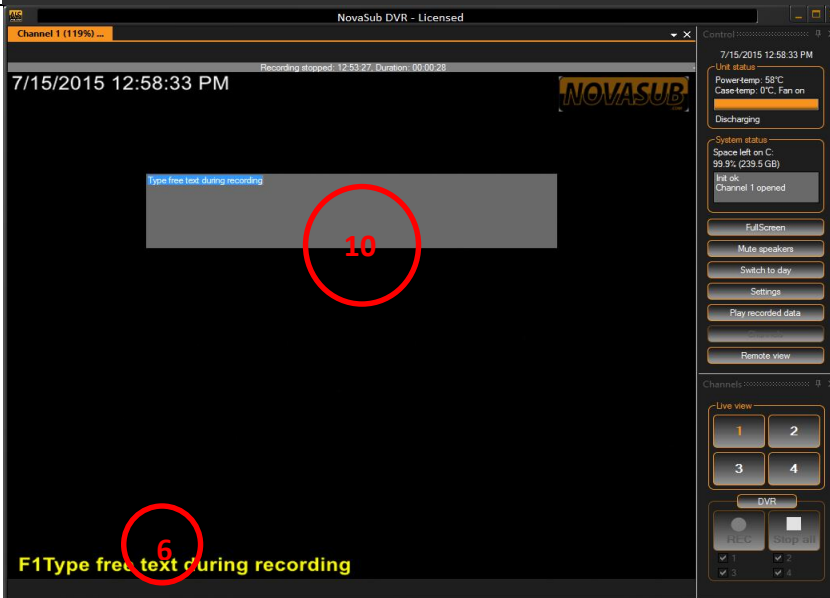
Also a free line(9) drawing can be made when Overlay drawing is selected.



You can place the overlay anywhere you want, change the font type, size and color. See Settings.

### Free text overlay

F1 and F2 are free text lines(6) which can be accessed with F1 and F2 during live view and recording. A window(10) will pop-up to change the textline or type a new one. Press Enter to confirm, and the overlay text will be updated.

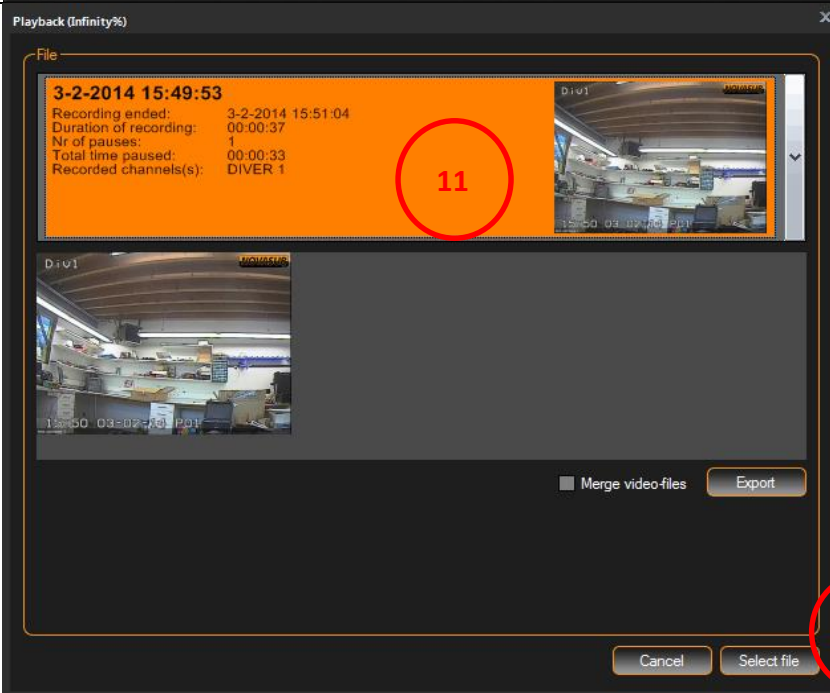


Set the F1 and F2 first in the settings.

Hold down CTRL and press Enter to add a second line during typing

### Playback

Press *Play Recorded data* at the right side of the main menu. The player is opened in a new window. Select the file at the scroll down bar (11) and press *Select File* (12).



The last recording is at the top. The Snapshots are placed as miniature and can be viewed by clicking on top(9).